



WESTWOODLEBER

WESTWOODLEBER
LET US GUIDE YOU HOME

Chambers Street, Hertford, SG14 1PL
Guide price £650,000



Chambers Street, Hertford, SG14 1PL

Westwood Leber are delighted to bring to the market this exceptional three/four-bedroom townhouse, forming part of an exclusive development completed just last year and ideally positioned in the very heart of Hertford.

Finished to an outstanding specification throughout, this beautifully designed home offers over 1,140 sq ft of flexible accommodation arranged over three floors and benefits from a substantial remaining term of the original NHBC warranty, providing complete peace of mind for prospective purchasers.

The ground floor comprises a welcoming entrance hall, a stylish living room and a contemporary kitchen/dining room fitted with high-quality integrated appliances, complemented by a separate utility room and cloakroom. Bi-fold doors open directly onto a generous balcony terrace, creating an ideal space for outdoor dining and entertaining.

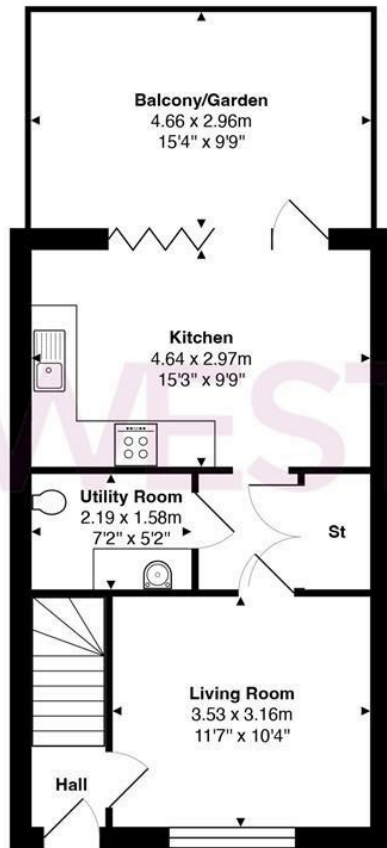
The first floor offers two well-proportioned bedrooms and a luxurious family bathroom, whilst the principal bedroom enjoys access to its own private balcony. Occupying the top floor are two further versatile rooms, perfectly suited as bedrooms, a home office, dressing room or additional reception space, together with a beautifully appointed shower room.

Further benefits include underfloor heating throughout, designated parking immediately to the front of the property with an electric vehicle charging point, additional guest parking and an enviable town centre setting just moments from Hertford's vibrant range of independent shops, restaurants, bars and both mainline

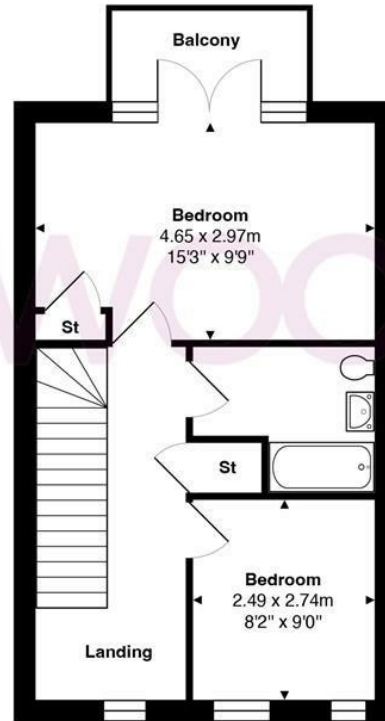


WESTWOODLEBER

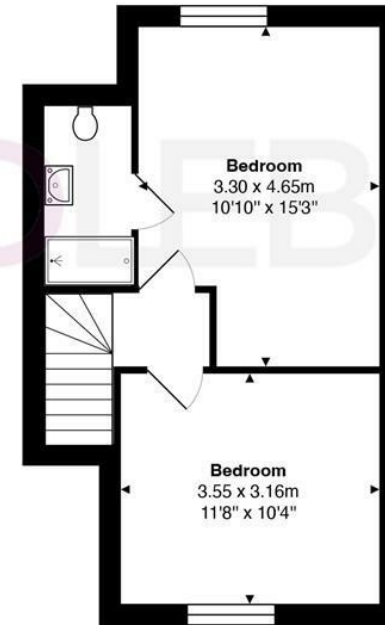
WESTWOODLEBER
LET US GUIDE YOU HOME



Ground Floor



First Floor



Second Floor

Total Area: approx. 106.2 m² ... 1143 ft² (excluding balcony/garden, balcony)

THE FLOORPLAN IS FOR ILLUSTRATIVE PURPOSES ONLY AND IS NOT TO SCALE.
Measurements and features are approximate and may differ from the actual property. Verify all details independently; no liability is accepted for errors or omissions.

Property marketing provided by www.fotomarketing.co.uk









WESTWOODLEBER



WESTWOODLEBER



WESTWOODLEBER



WESTWOODLEBER







